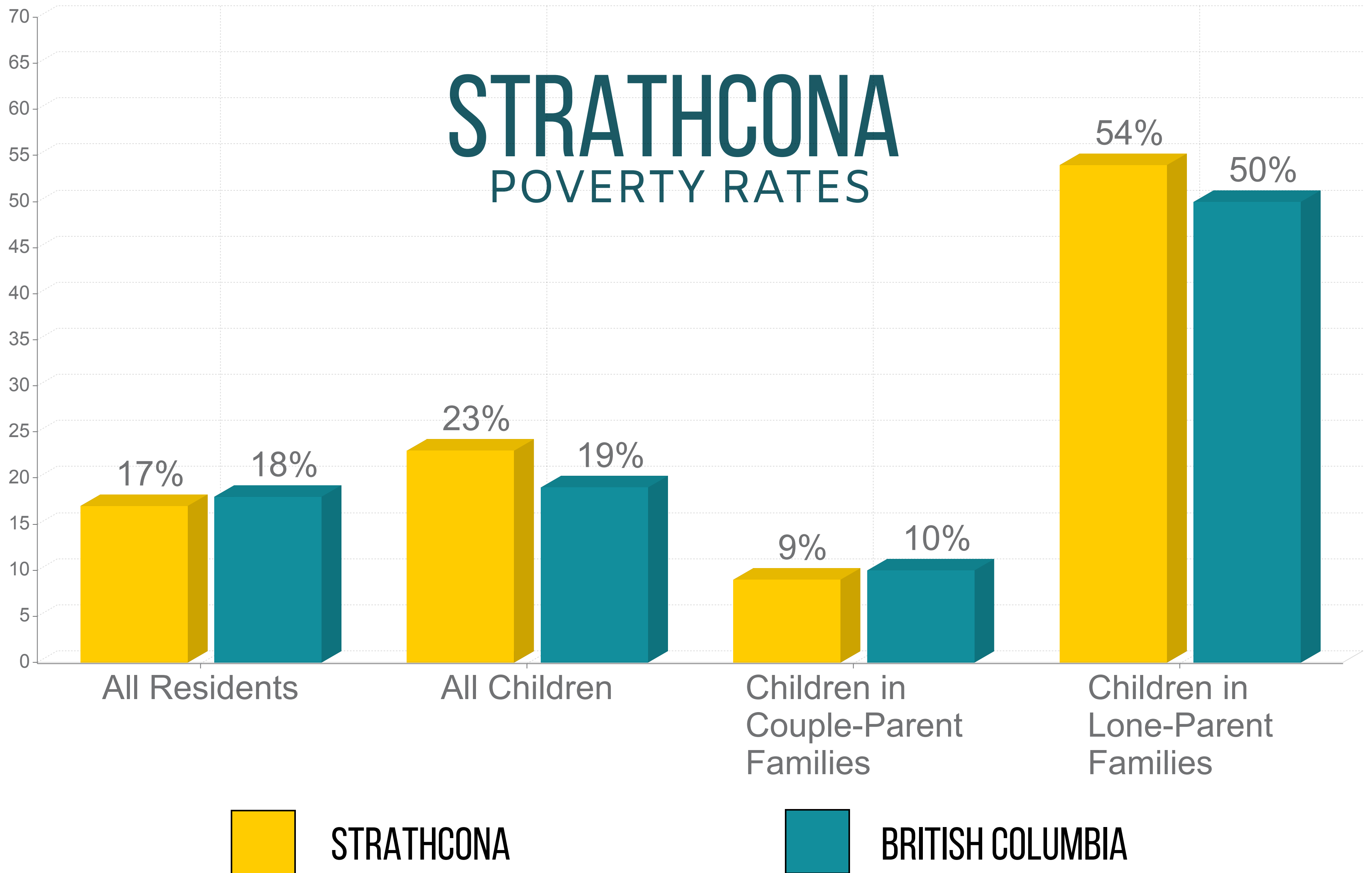


# BC REGIONAL POVERTY STATISTICS



# REGIONAL HIGHLIGHTS FROM THE 2020 BC POVERTY REPORT CARD

## STRATHCONA

In the Strathcona region, 1,950 (nearly 1 in 4) children live in poverty. The child poverty rate in this area is 4 percentage points higher than the provincial average and 6 percentage points higher than the all-residents poverty rate, demonstrating that children are disproportionately affected by poverty in this region. Children in lone-parent families are at particular risk with a child poverty rate six times higher than the rate for children in couple-parent families.

17 %

of all residents live in poverty



23 %

of children live in poverty

1,950

children live in poverty



9 %

poverty rate for children in couple-parent families

54 %

poverty rate for children in lone-parent families



**firstcall** BC CHILD AND YOUTH ADVOCACY COALITION

**sparc bc**  
people. planning. positive change.

Read the full report at [still1in5.ca](http://still1in5.ca)