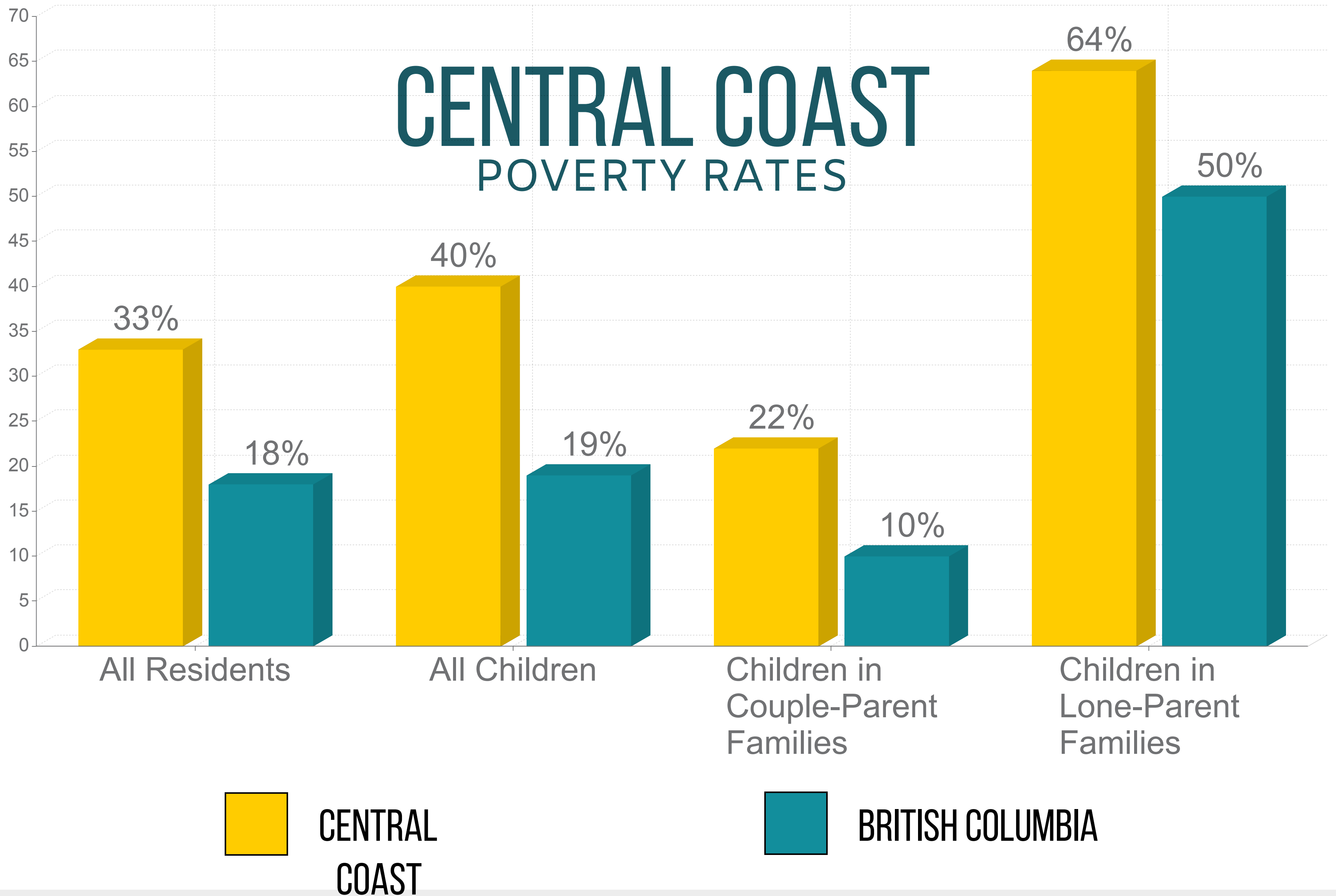


# BC REGIONAL POVERTY STATISTICS



# REGIONAL HIGHLIGHTS FROM THE 2020 BC POVERTY REPORT CARD

## CENTRAL COAST

In the Central Coast region, 350 (or 2 in 5) children live in poverty. This region's child poverty rate is the highest in BC and at 40% is over 21 percentage points higher than the provincial average. It also has the highest poverty rates of all regions for children in lone-parent and couple-parent families.

33 %

of all residents live in poverty



40 %

of children live in poverty

350

children live in poverty



22 %

poverty rate for children in couple-parent families

64 %

poverty rate for children in lone-parent families



**firstcall** BC CHILD AND YOUTH ADVOCACY COALITION

**sparc bc**

people. planning. positive change.

Read the full report at [still1in5.ca](http://still1in5.ca)