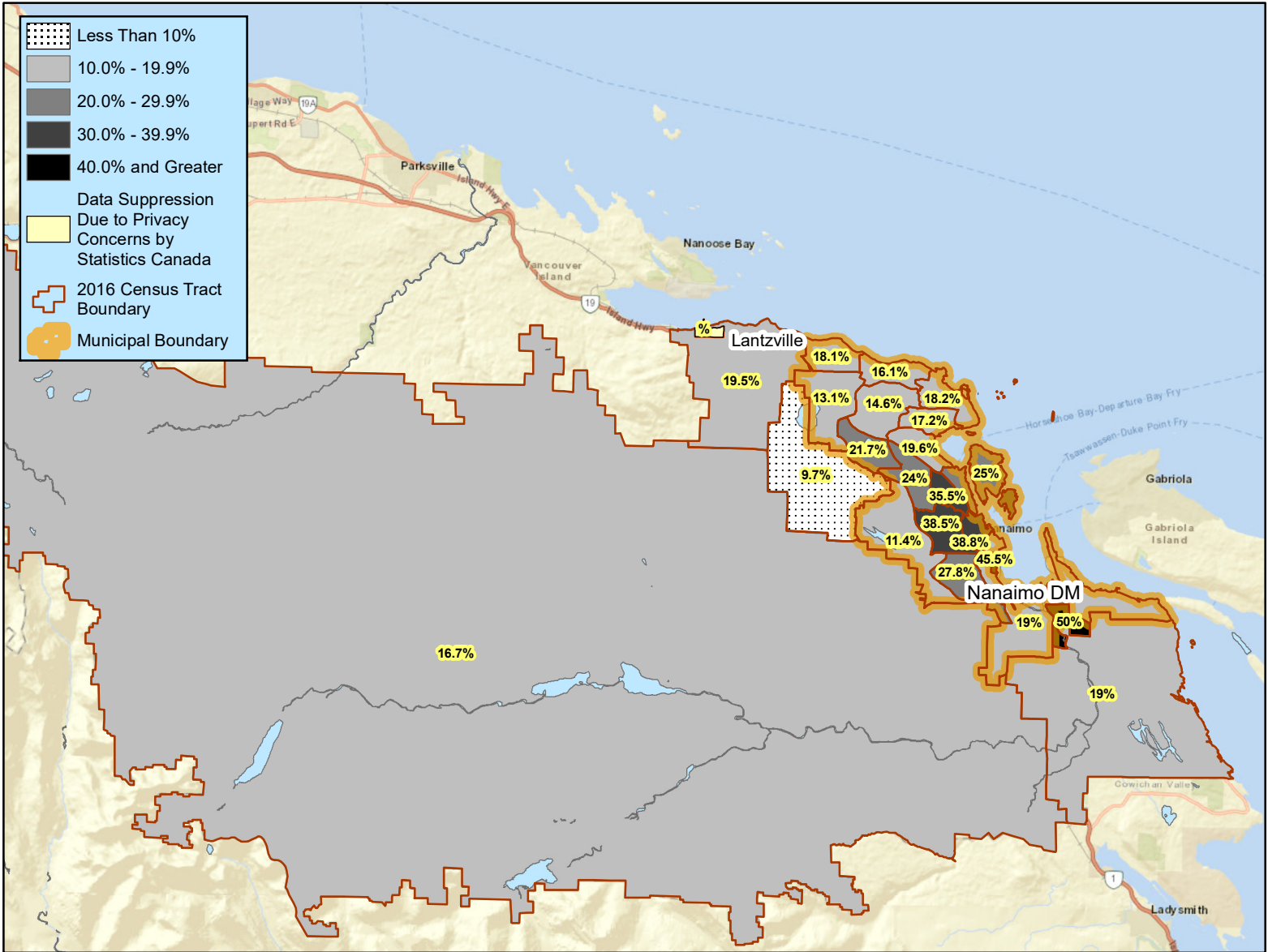


**% of Children 0-17 Years Old in Low Income Families , Nanaimo Census Agglomeration  
Census Tracts, Based on Census Family Low Income After Tax Measure ( CFLIM-AT), 2017**



Source: Statistics Canada  
Table I-13 After Tax low income status of tax filers and dependents (census family low income measure, CFLIM-AT)  
for couple and lone parent family composition, 2017