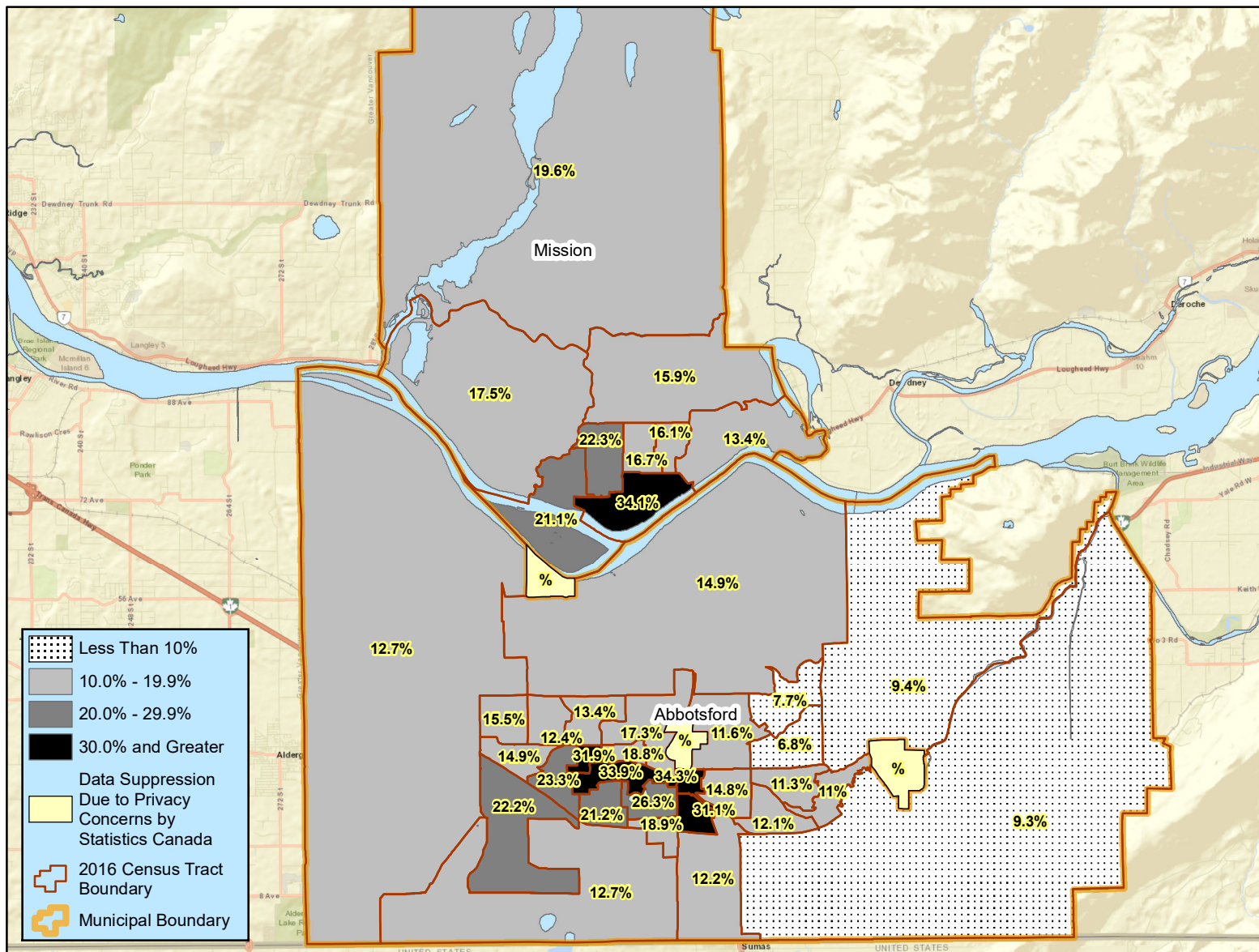


% of Children 0-17 Years Old in Low Income Families, Abbotsford-Mission Census Metropolitan Area Census Tracts, Based on Census Family Low Income After Tax Measure (CFLIM-AT), 2017



Source: Statistics Canada
Table I-13 After Tax low income status of tax filers and dependents (census family low income measure, CFLIM-AT)
for couple and lone parent family composition, 2017